

# SEND Plan for OABL

Through assessment, class teacher raises concern despite QFT strategies being used



Initial concern discussed with parent and interventions are put into place in class. These are reviewed after a 3/4 week block



If after this block of intervention the child still isn't making any progress the teacher will seek support from the SENCO. The SENCO will come and observe and feedback to teacher and parent, giving recommendations and strategies for the class teacher to try.



The SENCO will meet with teacher to review the recommendations and interventions



If there is no progress being made in wave 1 after half a term of assess, plan, do, review (APDR), the child will be placed on SEND register in discussion with parents



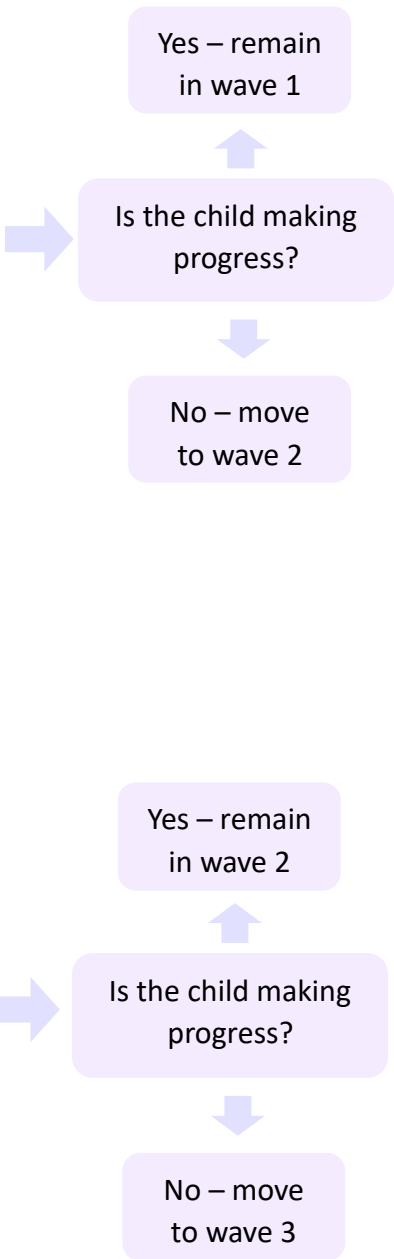
The teacher will complete a pathway plan with 3 SMART targets, these should still include the interventions from wave 1 to continue the APDR



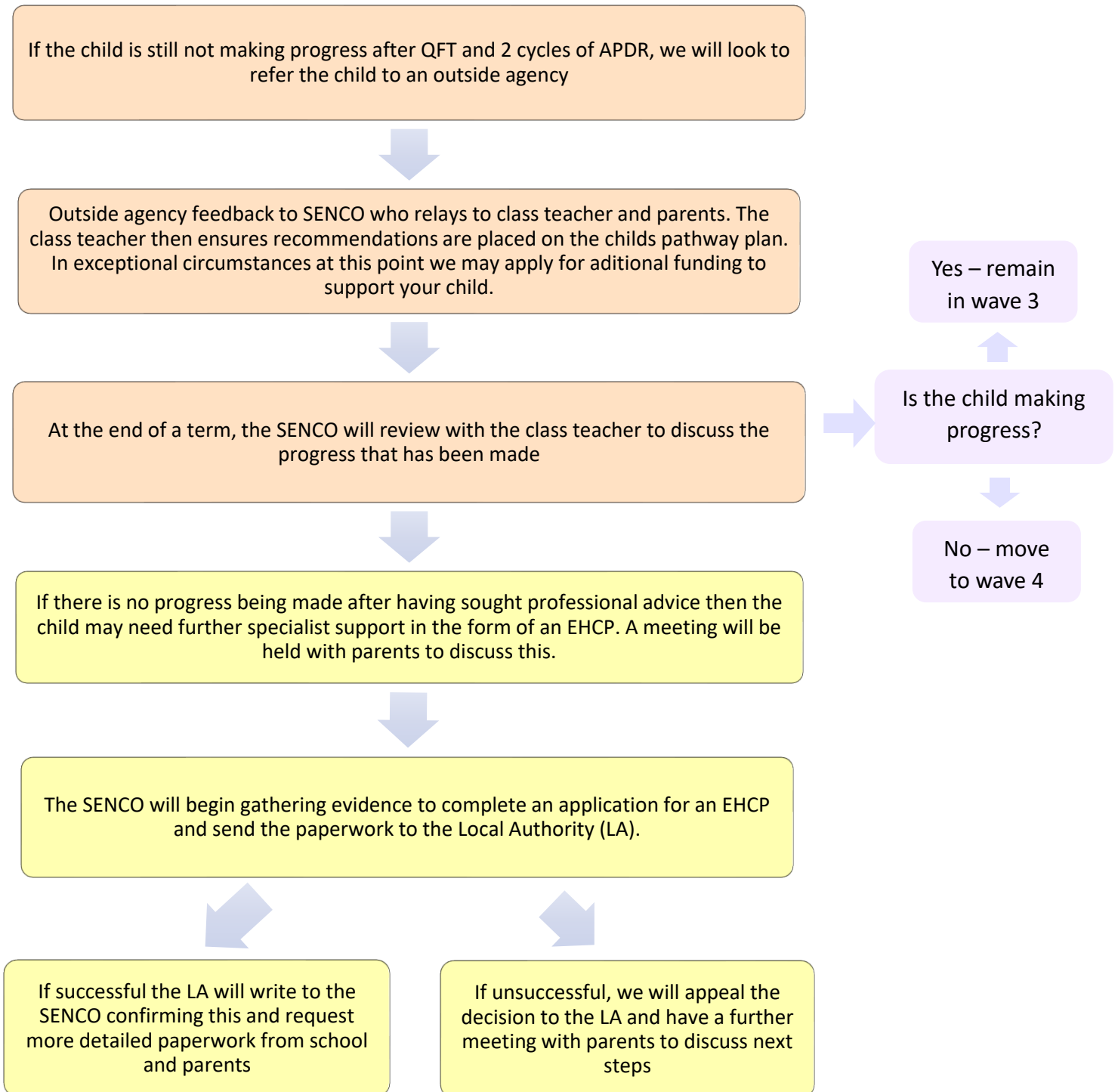
The child's progress will be monitored over a term where the class teacher will meet with the SENCO to discuss

In OABL we talk about SEND support in waves. These are colour coded through out this chart as below:

- Wave 1
- Wave 2
- Wave 3
- Wave 4



## SEND Plan for OABL



Once an EHCP application has been accepted it can take a long time for the EHCP to be in place. The LA try to keep to a timescale of 20 weeks but this isn't always the case and can take weeks longer. The SENCO will keep you updated throughout the stages of the EHCP to let you know how it is getting on and where your child is in the process.